



 ZEDSTRIP

Brought to life by



MORE THAN
DEVELOPERS

**WE
DREAM
BIG**

"We design to make a difference and bring happiness.
We embrace creativity, innovation, sustainability
and harmony. We are more than developers."

Chairperson

Naguib Sawiris

ABOUT ORA

We bring extraordinary visions to life, harnessing the natural beauty of landscapes and managing the development process from concept to realization to create rewarding and sustainable environments of uncompromising quality,

Ora developers has a proven track record of creating beautiful environments that balance exceptional thinking with enduringly sensitive design.

We cherish the natural world around us, taking great care to design, develop and construct high quality environments that not only sit comfortably within their surroundings, but have sustainability at their core. Our developments bring opportunities for all while offering a wide range of enjoyable lifestyle experiences.

ABOUT ZED

Zed brings you projects that inhabit the urban areas of Cairo to bring you luxurious real estate in addition to a brilliantly constructed landscape that interconnects you with peaceful living within your standards.

A portfolio of versatile yet coherent projects such as Zed El Sheikh Zayed, Zed Strip El Sheikh Zayed, and Zed East that present architectural sensations in each section.

Bridging concepts of modernity and nature in one environment, ZED brings the true meaning of living in harmony to the residents of Cairo.

ZED STRIP

As we remain focused on constructing a vision filled with luxury and sustainability within a community, we introduce the Zed Strip, affirming the possibilities of merging convenience while maintaining quality in a versatile and luxurious complex.

The Zed Strip, being the newest addition to our Zed East entity, strategically connects all your everyday needs in one coherent environment.

Featuring a co-working space, banks, shops and dining areas. Placing entertainment, professionalism, and convenience.

ZED STRIP EAST

Land Area: 134,400 sqm (32 feddan)
Total Built-Up Area: 168,000 sqm
No. of Floors: G+6 & G+7



OFFICES: 138,00 sqm



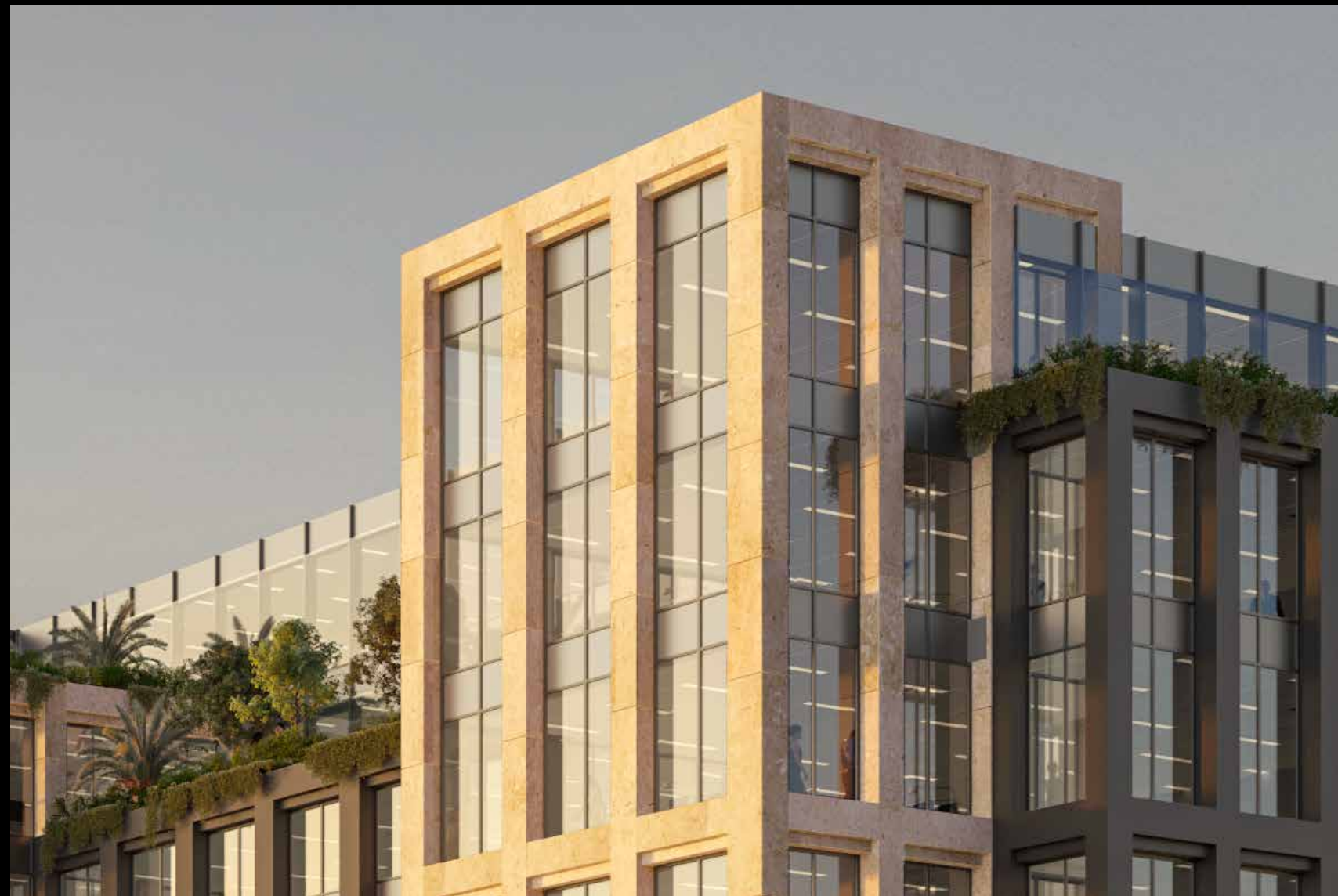
RETAIL: 30,00 sqm













LOCATION

The Zed Strip is the newest addition to our Zed East entity, placed in a unique location in New Cairo and near the new administrative capital. Placing emphasis upon creating popularity and convenience to the different residents located in New Cairo will be considered an intersectional stop. Bringing you a new experience integrated in the heart of the future business world.



ZED EAST MASTER PLAN



STRIP MASTER PLAN

“At the heart of the Zed East Masterplan is the Commercial campus with over 130,000 m² of prime office space occupying 0.5 km of frontage onto the East Ring Road. Formed into a grand crescent that sweeps back from the highway the development has an unmistakable presence, but it is what lies behind that gives the campus its heart and soul. The office buildings frame a ribbon of interconnected courtyards and green plazas which are home to over 30,000 m² of retail, leisure, café, restaurant spaces and a supermarket so you have everything you need on your doorstep. All buildings are connected by basement parking and an additional parking structure at the rear of the site means there will be ample covered parking at any time of the day or night. To the South the campus opens out onto the expansive grounds of the Zed East Club with excellent views over the football pitches and facilities”





FACILITIES AND AMENITIES

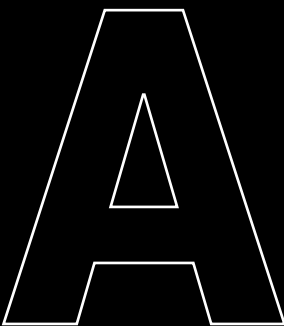
The Zed Strip introduces the essence of bringing a community together, creating an experience of movement and integration while remaining in the confines of your area of living. Everything you need for your day-to-day needs. From shopping, dining, facilities (supermarkets & pharmacies) to a kid's area, and entertainment outlets including a dedicated underground and parking building; all in one single stroll.

FLOOR PLANS



BUILDING A

MASTER PLAN



BUILDING A

FIRST FLOOR

| | Room | Dimensions | Area | Terrace |
|---|--------|-----------------|---------|---------|
| A | Office | 10.20m x 28.35m | 387 sqm | 29 sqm |
| B | Office | 7.75m x 15.90m | 166 sqm | |
| C | Office | 7.75m x 13.80m | 144 sqm | |
| D | Office | 7.75m x 12.95m | 150 sqm | |
| E | Office | 7.75m x 12.95m | 150 sqm | |
| F | Office | 7.75m x 15.00m | 157 sqm | |
| G | Office | 7.75m x 11.40m | 131 sqm | |
| H | Office | 10.10m x 30.20m | 381 sqm | 17 sqm |
| I | Office | 7.75m x 9.35m | 100 sqm | 36 sqm |
| J | Office | 7.75m x 8.35m | 90 sqm | 45 sqm |
| K | Office | 7.75m x 9.35m | 100 sqm | 35 sqm |
| L | Office | 7.55m x 8.35m | 88 sqm | 37 sqm |

- Note:
- Terraces are not included in area.
 - Offices include provision for wet areas, which are to be executed by the Client if needed in pre-approved locations.
 - Architectural plans and perspectives might be modified according to the final design and authorities regulations.
 - Internal dimensions are linked to the structural elements and include plaster and wall finishes thickness.



BUILDING A

SECOND FLOOR

| | Room | Dimensions | Area |
|---|--------|-----------------|---------|
| A | Office | 10.20m x 28.35m | 387 sqm |
| B | Office | 7.75m x 15.90m | 166 sqm |
| C | Office | 7.75m x 13.75m | 144 sqm |
| D | Office | 7.75m x 12.95m | 150 sqm |
| E | Office | 7.75m x 12.95m | 150 sqm |
| F | Office | 7.75m x 15.00m | 157 sqm |
| G | Office | 7.75m x 11.40m | 131 sqm |
| H | Office | 10.10m x 30.20m | 381 sqm |
| I | Office | 7.75m x 9.35m | 100 sqm |
| J | Office | 7.75m x 8.35m | 90 sqm |
| K | Office | 7.75m x 9.35m | 100 sqm |
| L | Office | 7.55m x 8.35m | 88 sqm |

- Note:
- Terraces are not included in area.
 - Offices include provision for wet areas, which are to be executed by the Client if needed in pre-approved locations.
 - Architectural plans and perspectives might be modified according to the final design and authorities regulations.
 - Internal dimensions are linked to the structural elements and include plaster and wall finishes thickness.



BUILDING A

THIRD FLOOR

| | Room | Dimensions | Area |
|---|--------|-----------------|---------|
| A | Office | 10.20m x 28.35m | 387 sqm |
| B | Office | 7.75m x 15.90m | 166 sqm |
| C | Office | 7.75m x 13.75m | 144 sqm |
| D | Office | 7.75m x 12.95m | 150 sqm |
| E | Office | 7.75m x 12.95m | 150 sqm |
| F | Office | 7.75m x 15.00m | 157 sqm |
| G | Office | 7.75m x 11.40m | 131 sqm |
| H | Office | 10.10m x 30.20m | 381 sqm |
| I | Office | 7.75m x 9.35m | 100 sqm |
| J | Office | 7.75m x 8.35m | 90 sqm |
| K | Office | 7.75m x 9.35m | 100 sqm |
| L | Office | 7.55m x 8.35m | 88 sqm |

- Note:
- Terraces are not included in area.
 - Offices include provision for wet areas, which are to be executed by the Client if needed in pre-approved locations.
 - Architectural plans and perspectives might be modified according to the final design and authorities regulations.
 - Internal dimensions are linked to the structural elements and include plaster and wall finishes thickness.



BUILDING A

FOURTH FLOOR

| | Room | Dimensions | Area |
|---|--------|-----------------|---------|
| A | Office | 10.20m x 28.35m | 387 sqm |
| B | Office | 7.75m x 15.90m | 166 sqm |
| C | Office | 7.75m x 13.75m | 144 sqm |
| D | Office | 7.75m x 12.95m | 150 sqm |
| E | Office | 7.75m x 12.95m | 150 sqm |
| F | Office | 7.75m x 15.00m | 157 sqm |
| G | Office | 7.75m x 11.40m | 131 sqm |
| H | Office | 10.10m x 30.20m | 381 sqm |
| I | Office | 7.75m x 9.35m | 100 sqm |
| J | Office | 7.75m x 8.35m | 90 sqm |
| K | Office | 7.75m x 9.35m | 100 sqm |
| L | Office | 7.55m x 8.35m | 88 sqm |

Note:

- Terraces are not included in area.
- Offices include provision for wet areas, which are to be executed by the Client if needed in pre-approved locations.
- Architectural plans and perspectives might be modified according to the final design and authorities regulations.
- Internal dimensions are linked to the structural elements and include plaster and wall finishes thickness.



BUILDING A

FIFTH FLOOR

| | Room | Dimensions | Area | Terrace |
|---|--------|-----------------|---------|---------|
| A | Office | 26.00m x 26.45m | 720 sqm | 77 sqm |
| B | Office | 31.75m x 15.00m | 574 sqm | |
| C | Office | 32.15m x 29.20m | 618 sqm | 41 sqm |

Note:

- Terraces are not included in area.
- Offices include provision for wet areas, which are to be executed by the Client if needed in pre-approved locations.
- Architectural plans and perspectives might be modified according to the final design and authorities regulations.
- Internal dimensions are linked to the structural elements and include plaster and wall finishes thickness.



BUILDING A

SIXTH FLOOR

| | Room | Dimensions | Area | Terrace |
|---|--------|-----------------|---------|---------|
| A | Office | 26.00m x 26.45m | 720 sqm | |
| B | Office | 31.75m x 13.90m | 546 sqm | 21 sqm |
| C | Office | 32.15m x 29.20m | 618 sqm | |



Note:

- Terraces are not included in area.
- Offices include provision for wet areas, which are to be executed by the Client if needed in pre-approved locations.
- Architectural plans and perspectives might be modified according to the final design and authorities regulations.
- Internal dimensions are linked to the structural elements and include plaster and wall finishes thickness.

BUILDING A

SEVENTH FLOOR

| | Room | Dimensions | Area | Terrace |
|---|--------|-----------------|---------|---------|
| A | Office | 26.00m x 26.45m | 695 sqm | 20 sqm |
| B | Office | 31.75m x 13.95m | 446 sqm | 79 sqm |
| C | Office | 8.15m x 29.20m | 320 sqm | 19 sqm |



Note:

- Terraces are not included in area.
- Offices include provision for wet areas, which are to be executed by the Client if needed in pre-approved locations.
- Architectural plans and perspectives might be modified according to the final design and authorities regulations.
- Internal dimensions are linked to the structural elements and include plaster and wall finishes thickness.

BUILDING B

MASTER PLAN

B



BUILDING B

FIRST FLOOR

| | Room | Dimensions | Area | Terrace |
|---|--------|-----------------|---------|---------|
| A | Office | 13.20m x 8.80m | 152 sqm | 71 sqm |
| B | Office | 7.75m x 9.65m | 111 sqm | 18 sqm |
| C | Office | 7.75m x 8.35m | 96 sqm | 28 sqm |
| D | Office | 5.70m x 8.35m | 72 sqm | 21 sqm |
| E | Office | 7.75m x 6.65m | 92 sqm | 41 sqm |
| F | Office | 9.80m x 16.75m | 213 sqm | 101 sqm |
| G | Office | 9.45m x 9.25m | 132 sqm | |
| H | Office | 7.75m x 14.30m | 160 sqm | |
| I | Office | 7.75m x 15.30m | 171 sqm | |
| J | Office | 7.75m x 10.60m | 131 sqm | |
| K | Office | 12.50m x 16.90m | 236 sqm | 23 sqm |

- Note:
- Terraces are not included in area.
 - Offices include provision for wet areas, which are to be executed by the Client if needed in pre-approved locations.
 - Architectural plans and perspectives might be modified according to the final design and authorities regulations.
 - Internal dimensions are linked to the structural elements and include plaster and wall finishes thickness.



BUILDING B

SECOND FLOOR

| | Room | Dimensions | Area |
|---|--------|-----------------|---------|
| A | Office | 13.20m x 8.80m | 152 sqm |
| B | Office | 7.75m x 9.65m | 111 sqm |
| C | Office | 7.75m x 8.35m | 96 sqm |
| D | Office | 7.75m x 8.35m | 97 sqm |
| E | Office | 7.75m x 6.65m | 92 sqm |
| F | Office | 9.80m x 16.75m | 213 sqm |
| G | Office | 9.45m x 9.25m | 132 sqm |
| H | Office | 7.75m x 14.30m | 160 sqm |
| I | Office | 7.75m x 15.30m | 171 sqm |
| J | Office | 7.75m x10.60m | 131 sqm |
| K | Office | 12.50m x 16.90m | 236 sqm |

- Note:
- Terraces are not included in area.
 - Offices include provision for wet areas, which are to be executed by the Client if needed in pre-approved locations.
 - Architectural plans and perspectives might be modified according to the final design and authorities regulations.
 - Internal dimensions are linked to the structural elements and include plaster and wall finishes thickness.



BUILDING B

THIRD FLOOR

| | Room | Dimensions | Area |
|---|--------|-----------------|---------|
| A | Office | 13.20m x 8.80m | 152 sqm |
| B | Office | 7.75m x 9.65m | 111 sqm |
| C | Office | 7.75m x 8.35m | 96 sqm |
| D | Office | 7.75m x 8.35m | 97 sqm |
| E | Office | 7.75m x 6.65m | 92 sqm |
| F | Office | 9.80m x 16.75m | 213 sqm |
| G | Office | 9.45m x 9.25m | 132 sqm |
| H | Office | 7.75m x 14.30m | 160 sqm |
| I | Office | 7.75m x 15.30m | 171 sqm |
| J | Office | 7.75m x 10.60m | 131 sqm |
| K | Office | 12.50m x 16.90m | 236 sqm |

- Note:
- Terraces are not included in area.
 - Offices include provision for wet areas, which are to be executed by the Client if needed in pre-approved locations.
 - Architectural plans and perspectives might be modified according to the final design and authorities regulations.
 - Internal dimensions are linked to the structural elements and include plaster and wall finishes thickness.



BUILDING B

FOURTH FLOOR

| | Room | Dimensions | Area |
|---|--------|-----------------|---------|
| A | Office | 13.20m x 8.80m | 152 sqm |
| B | Office | 7.75m x 9.65m | 111 sqm |
| C | Office | 7.75m x 8.35m | 96 sqm |
| D | Office | 7.75m x 8.35m | 97 sqm |
| E | Office | 7.75m x 6.65m | 92 sqm |
| F | Office | 9.80m x 16.75m | 213 sqm |
| G | Office | 9.45m x 9.25m | 132 sqm |
| H | Office | 8.60m x 14.30m | 160 sqm |
| I | Office | 7.75m x 15.30m | 171 sqm |
| J | Office | 7.75m x 10.60m | 131 sqm |
| K | Office | 12.50m x 16.90m | 236 sqm |

Note:

- Terraces are not included in area.
- Offices include provision for wet areas, which are to be executed by the Client if needed in pre-approved locations.
- Architectural plans and perspectives might be modified according to the final design and authorities regulations.
- Internal dimensions are linked to the structural elements and include plaster and wall finishes thickness.



BUILDING B

FIFTH FLOOR

| | Room | Dimensions | Area | Terrace |
|---|--------|-----------------|---------|---------|
| A | Office | 13.20m x 8.80m | 152 sqm | |
| B | Office | 7.75m x 9.65m | 111 sqm | |
| C | Office | 7.75m x 8.35m | 96 sqm | |
| D | Office | 7.75m x 8.35m | 97 sqm | |
| E | Office | 7.75m x 6.65m | 92 sqm | |
| F | Office | 9.80m x 16.75m | 213 sqm | |
| G | Office | 9.45m x 9.25m | 132 sqm | |
| H | Office | 8.60m x 14.30m | 160 sqm | |
| I | Office | 7.75m x 15.30m | 171 sqm | |
| J | Office | 7.75m x 7.80m | 99 sqm | 23 sqm |
| K | Office | 12.50m x 16.90m | 236 sqm | |

Note:

- Terraces are not included in area.
- Offices include provision for wet areas, which are to be executed by the Client if needed in pre-approved locations.
- Architectural plans and perspectives might be modified according to the final design and authorities regulations.
- Internal dimensions are linked to the structural elements and include plaster and wall finishes thickness.



BUILDING B

SIXTH FLOOR

| | Room | Dimensions | Area | Terrace |
|---|--------|-----------------|---------|---------|
| A | Office | 13.20m x 8.80m | 152 sqm | |
| B | Office | 7.75m x 9.65m | 111 sqm | |
| C | Office | 7.75m x 8.35m | 96 sqm | |
| D | Office | 7.75m x 8.35m | 97 sqm | |
| E | Office | 7.75m x 6.95m | 92 sqm | |
| F | Office | 9.80m x 16.75m | 210 sqm | |
| G | Office | 9.45m x 9.25m | 132 sqm | |
| H | Office | 8.60m x 14.30m | 160 sqm | |
| I | Office | 7.75m x 15.30m | 171 sqm | |
| J | Office | 7.75m x 7.80m | 99 sqm | |
| K | Office | 10.50m x 13.60m | 176 sqm | 46 sqm |

Note:

- Terraces are not included in area.
- Offices include provision for wet areas, which are to be executed by the Client if needed in pre-approved locations.
- Architectural plans and perspectives might be modified according to the final design and authorities regulations.
- Internal dimensions are linked to the structural elements and include plaster and wall finishes thickness.



BUILDING B

SEVENTH FLOOR

| | Room | Dimensions | Area | Terrace |
|---|--------|-----------------|---------|---------|
| A | Office | 13.20m x 8.80m | 152 sqm | |
| B | Office | 7.75m x 8.60m | 96 sqm | 11 sqm |
| C | Office | 7.75m x 8.35m | 96 sqm | |
| D | Office | 7.75m x 8.35m | 97 sqm | |
| E | Office | 7.75m x 6.95m | 92 sqm | |
| F | Office | 9.80m x 16.75m | 210 sqm | |
| G | Office | 8.10m x 6.90m | 82 sqm | 37 sqm |
| J | Office | 7.75m x 7.80m | 99 sqm | |
| K | Office | 10.50m x 13.60m | 176 sqm | |

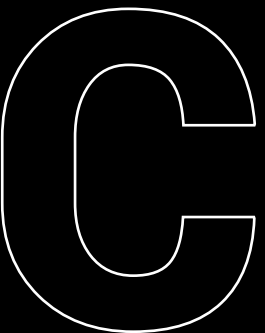
Note:

- Terraces are not included in area.
- Offices include provision for wet areas, which are to be executed by the Client if needed in pre-approved locations.
- Architectural plans and perspectives might be modified according to the final design and authorities regulations.
- Internal dimensions are linked to the structural elements and include plaster and wall finishes thickness.



BUILDING C

MASTER PLAN



BUILDING C

FIRST FLOOR

| | Room | Dimensions | Area | Terrace |
|---|--------|----------------|---------|---------|
| A | Office | 9.00m x 16.75m | 187 sqm | |
| B | Office | 7.70m x 13.85m | 127 sqm | 35 sqm |
| C | Office | 7.75m x 14.75m | 166 sqm | 28 sqm |
| D | Office | 7.75m x 14.75m | 165 sqm | 26 sqm |
| E | Office | 5.80m x 9.65m | 84 sqm | 18 sqm |
| F | Office | 7.75m x 7.65m | 102 sqm | 39 sqm |
| G | Office | 9.45m x 16.80m | 218 sqm | 33 sqm |
| H | Office | 9.70m x 9.65m | 137 sqm | |
| I | Office | 7.75m x 8.30m | 96 sqm | |
| J | Office | 7.75m x 7.30m | 85 sqm | |
| K | Office | 7.75m x 8.80m | 102 sqm | |
| L | Office | 9.45m x 8.35m | 119 sqm | |

Note:

- Terraces are not included in area.
- Offices include provision for wet areas, which are to be executed by the Client if needed in pre-approved locations.
- Architectural plans and perspectives might be modified according to the final design and authorities regulations.
- Internal dimensions are linked to the structural elements and include plaster and wall finishes thickness.



BUILDING C

SECOND FLOOR

| | Room | Dimensions | Area |
|---|--------|----------------|---------|
| A | Office | 9.00m x 16.75m | 187 sqm |
| B | Office | 7.70m x 13.85m | 127 sqm |
| C | Office | 7.75m x 14.75m | 166 sqm |
| D | Office | 7.75m x 14.75m | 165 sqm |
| E | Office | 7.75m x 9.65m | 125 sqm |
| F | Office | 7.75m x 7.65m | 102 sqm |
| G | Office | 9.45m x 16.80m | 218 sqm |
| H | Office | 9.70m x 9.65m | 137 sqm |
| I | Office | 7.75m x 8.30m | 96 sqm |
| J | Office | 7.75m x 7.30m | 85 sqm |
| K | Office | 7.75m x 8.80m | 102 sqm |
| L | Office | 9.45m x 8.35m | 119 sqm |

- Note:
- Terraces are not included in area.
 - Offices include provision for wet areas, which are to be executed by the Client if needed in pre-approved locations.
 - Architectural plans and perspectives might be modified according to the final design and authorities regulations.
 - Internal dimensions are linked to the structural elements and include plaster and wall finishes thickness.



BUILDING C

THIRD FLOOR

| | Room | Dimensions | Area |
|---|--------|----------------|---------|
| A | Office | 9.00m x 16.75m | 187 sqm |
| B | Office | 7.70m x 13.85m | 127 sqm |
| C | Office | 7.75m x 14.75m | 166 sqm |
| D | Office | 7.75m x 14.75m | 165 sqm |
| E | Office | 7.75m x 9.65m | 125 sqm |
| F | Office | 7.75m x 7.65m | 102 sqm |
| G | Office | 9.45m x 16.80m | 218 sqm |
| H | Office | 9.70m x 9.65m | 137 sqm |
| I | Office | 7.75m x 8.30m | 96 sqm |
| J | Office | 7.75m x 7.30m | 85 sqm |
| K | Office | 7.75m x 8.80m | 102 sqm |
| L | Office | 9.45m x 8.35m | 119 sqm |

- Note:
- Terraces are not included in area.
 - Offices include provision for wet areas, which are to be executed by the Client if needed in pre-approved locations.
 - Architectural plans and perspectives might be modified according to the final design and authorities regulations.
 - Internal dimensions are linked to the structural elements and include plaster and wall finishes thickness.



BUILDING C

FOURTH FLOOR

| | Room | Dimensions | Area | Terrace |
|---|--------|----------------|---------|---------|
| A | Office | 9.00m x 16.75m | 187 sqm | |
| B | Office | 7.70m x 13.85m | 127 sqm | |
| C | Office | 7.75m x 14.75m | 166 sqm | |
| D | Office | 7.75m x 14.75m | 165 sqm | |
| E | Office | 7.75m x 9.65m | 125 sqm | |
| F | Office | 7.75m x 5.75m | 78 sqm | 13 sqm |
| G | Office | 9.45m x 16.80m | 218 sqm | |
| H | Office | 9.70m x 9.65m | 137 sqm | |
| I | Office | 7.75m x 8.30m | 96 sqm | |
| J | Office | 7.75m x 7.30m | 85 sqm | |
| K | Office | 7.75m x 8.80m | 102 sqm | |
| L | Office | 9.45m x 8.35m | 119 sqm | |

- Note:
- Terraces are not included in area.
 - Offices include provision for wet areas, which are to be executed by the Client if needed in pre-approved locations.
 - Architectural plans and perspectives might be modified according to the final design and authorities regulations.
 - Internal dimensions are linked to the structural elements and include plaster and wall finishes thickness.



BUILDING C

FIFTH FLOOR

| | Room | Dimensions | Area | Terrace |
|---|--------|----------------|---------|---------|
| A | Office | 9.00m x 16.75m | 187 sqm | |
| B | Office | 7.70m x 13.85m | 127 sqm | |
| C | Office | 7.75m x 14.75m | 166 sqm | |
| D | Office | 7.75m x 13.45m | 151 sqm | 7 sqm |
| E | Office | 7.75m x 9.65m | 125 sqm | |
| F | Office | 7.75m x 5.75m | 78 sqm | |
| G | Office | 9.45m x 16.80m | 197 sqm | 12 sqm |
| H | Office | 9.70m x 9.65m | 137 sqm | |
| I | Office | 7.75m x 8.30m | 96 sqm | |
| J | Office | 7.75m x 7.30m | 85 sqm | |
| K | Office | 7.75m x 8.80m | 102 sqm | |
| L | Office | 9.45m x 8.35m | 119 sqm | |

- Note:
- Terraces are not included in area.
 - Offices include provision for wet areas, which are to be executed by the Client if needed in pre-approved locations.
 - Architectural plans and perspectives might be modified according to the final design and authorities regulations.
 - Internal dimensions are linked to the structural elements and include plaster and wall finishes thickness.



BUILDING C

SIXTH FLOOR

| | Room | Dimensions | Area | Terrace |
|---|--------|----------------|---------|---------|
| A | Office | 8.10m x 13.45m | 130 sqm | 34 sqm |
| B | Office | 7.70m x 11.35m | 98 sqm | 19 sqm |
| C | Office | 7.75m x 14.75m | 166 sqm | |
| D | Office | 7.75m x 13.45m | 151 sqm | |
| E | Office | 7.75m x 9.65m | 125 sqm | |
| F | Office | 7.75m x 5.75m | 78 sqm | |
| G | Office | 9.45m x 16.80m | 197 sqm | |
| H | Office | 9.70m x 9.65m | 137 sqm | |
| I | Office | 7.75m x 8.30m | 96 sqm | |
| J | Office | 7.75m x 7.30m | 85 sqm | |
| K | Office | 7.75m x 8.80m | 102 sqm | |
| L | Office | 9.45m x 7.80m | 115 sqm | |

- Note:
- Terraces are not included in area.
 - Offices include provision for wet areas, which are to be executed by the Client if needed in pre-approved locations.
 - Architectural plans and perspectives might be modified according to the final design and authorities regulations.
 - Internal dimensions are linked to the structural elements and include plaster and wall finishes thickness.

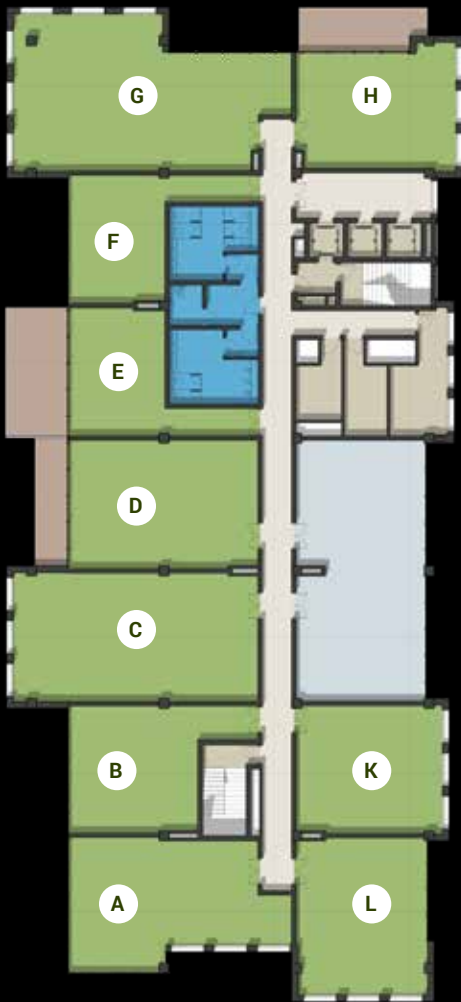


BUILDING C

SEVENTH FLOOR

| | Room | Dimensions | Area | Terrace |
|---|--------|----------------|---------|---------|
| A | Office | 8.10m x 13.45m | 130 sqm | |
| B | Office | 7.70m x 11.35m | 98 sqm | |
| C | Office | 7.75m x 14.75m | 166 sqm | |
| D | Office | 7.75m x 11.40m | 125 sqm | 15 sqm |
| E | Office | 7.75m x 5.75m | 79 sqm | 30 sqm |
| F | Office | 7.75m x 5.75m | 78 sqm | |
| G | Office | 9.45m x 16.80m | 197 sqm | |
| H | Office | 7.60m x 9.60m | 104 sqm | 20 sqm |
| K | Office | 7.75m x 8.80m | 102 sqm | |
| L | Office | 9.45m x 7.80m | 115 sqm | |

- Note:
- Terraces are not included in area.
 - Offices include provision for wet areas, which are to be executed by the Client if needed in pre-approved locations.
 - Architectural plans and perspectives might be modified according to the final design and authorities regulations.
 - Internal dimensions are linked to the structural elements and include plaster and wall finishes thickness.



 ZED STRIP — EAST